

Web+Center 10.0 Installation Guide

MS Windows 10/7 or Windows Server 2016/2012/2008



Version Date: March 2019

© 2019 Internet Software Sciences

<http://www.inet-sciences.com>

(650) 949-0942/Toll Free (888) 949-0942

Los Altos, CA 94022 USA

For installation support, please review our extensive set of support options available on our website or contact our friendly support staff.

Before installing and configuring the software, we recommend you contact our friendly support staff to discuss your optimum long term hosting strategies for your help desk. Proper placement of our product on a server configured outside of the firewall gives better options for our mobile apps and your users.

We will get your Help Desk up and running! We are happy to remote in and assist you personally with your install and help launch your successful Web+Center rollout. Free or licensed users! We have streamlined the install process for Version 9 with new install scripts to reduce install times by 80%.

Overview:

Welcome to the Web+Center Version 10.X installation guide for 64-bit operating systems using IIS 7 or Windows Server 2008 and later and MS Windows 7/10 and MS Windows 2016. *Web+Center can be installed on basically every MS Windows OS platform as long as it can run IIS (Internet Information Services).*

This install guide is designed to guide you through the installation of Web+Center using screen shots rather than textual descriptions. **Please view the screen shots carefully for individual interface options (checkboxes, settings, etc) and text box entries.**

If you need additional assistance with your installation, please visit our support page on our website at <https://www.inet-sciences.com/> for phone, web-based and email based support options.

Basic steps

1. Fully Install IIS (Internet Information Services) from Turn Windows Features ON/OFF – Control Panel enabling ASP and other web programming features
2. Download and run webcenter100.exe from <https://www.inet-sciences.com/webcenter100.exe>
3. Run the install scripts available in the install scripts directory of your webcenter folder to avoid steps 4 and 10
4. Configure default website properties of **
 - a. Enable Parent Paths **
 - b. Debugging Properties – Send error messages to browser **
 - c. Set limits – Set Max entity limit setting to 20,000,000 for file download **
 - d. Authentication **
 - e. Enable 32-bit IIS mode (if appropriate) **
 - f. Create the (7) Web+Center IIS application directories and 1 virtual directory **
5. Set the file security permissions for the Web+Center 10.X folders to everyone full control and no other users. Set this permission for Web+Center 100 folder and subfolders
6. Install SQL Server and SQL Server Management Studio (if necessary)
7. Create the Web+Center SQL database and set defaults (if using SQL Server)
8. Set the database security account and permissions for the wc100 user
9. Create the ODBC DSN webcenter100_db for the database
10. Register (REGSVR32) the SMTP and POP mailer DLLs on your computer**
11. Run the installation tests by running \localhost\tech100\installtest.htm
12. Testing the suite of 6 Web+center applications – Tech+Center, Customer+Center, etc

**** These install steps can be performed by new install set scripts or done manually**

Where to host the Web+Center application? – The most important decision to make for the long term effectiveness of your application!

Starting with Web+Center version 7.5, we started offering “mobile” friendly help desk apps for both the customer and technician that are designed to run on a smart phone or tablet. Although these apps will work in local and firewalled wi-fi networks, customers and techs can gain greater mobility if they can access the help desk application over their cell data networks. This requires hosting the Web+Center application on a windows machine that is configured to be outside the firewall.

A newer and very affordable option (\$20-\$50 month) now exists for organizations that do not feel comfortable running a server outside of the firewall by installing the Web+Center on a VPS (Virtual Private Server) at a third party vendor like GoDaddy.com

We invite you to review a newsletter article from 2015 on installing Web+Center on VPS at

<https://www.inet-sciences.com/webcenter-hosted-on-virtual-private-servers/>

Although our software can be installed on a laptop in the closet, we recommend you carefully evaluate and prepare a hosting environment that is solid, provides reasonable internet speed and connectivity, reliably backed up and easily accessible for maintenance. Migrations are always possible but best to find a good hosting server environment initially.

Decide which backend database to use – SQL*Server or ACCESS

We have total success of clients using either backend database. If you have more than 10-15 techs, you may want to use SQL*Server as it is a more robust database engine. Probably the 2 biggest decision factors to consider between SQL*Server or ACCESS is first your own expertise with either one of those applications. If you are a SQL*Server MS shop, SQL is probably the better backend database. If you are a smaller company and organization and do not have strong database skills in house, ACCESS should work fine and does not require purchasing or installing any additional database software on the Web+Center server machine. You won't need an MS Access/Office application installed on the server hosting Web+Center since does not use the MS Access front end and the database ODBC drivers/utilities already exist on ALL MS operating systems.

If you're going to use SQL Server as your database, you'll need to have the SQL Server database and SQL Server Management Studio installed or able to connect to a SQL database server so you can run SQL Scripts to create the database and tables and set user permissions. If running SQL*Server, you must separately purchase any required SQL*Server licenses required for this application.

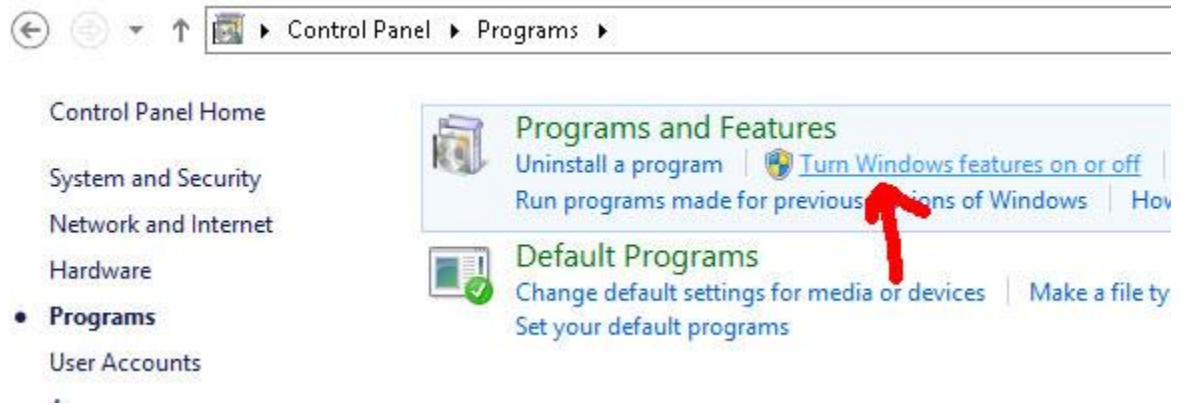
So, your database options are:

- A. MS Access or SQL Server 32-bit database requires 32-bit compatibility mode, 32-bit ODBC configuration, 32-bit mail drivers (automatically installed during installation)
- B. SQL Server 64-bit uses regular IIS setup, 64-bit (the default) ODBC configuration, but separate installation/registration of 64-bit mail utilities.
- C. MS Access 64 bit drivers - Not recommended**– Uses 64 bit ODBC Access drivers and running in IIS in 64 bit mode with 64 bit SMTP drivers ** It appears that MS does not want you to run Office and ACCESS in 64 bit mode either for lots of compatibility reasons!

IMPORT NOTE: All of the components, (database, IIS and ASP mail utilities, ODBC drivers) must all be matching in size of 32 bits or 64 bits.

STEP 1. Install or Enable IIS (Internet Information Services)

- a. Log into the server using an account with Administrator privileges.
- b. Open **Programs and Features** in the Control Panel (Start → Control Panel → Programs → Programs and Features).
- c. Select the Turn Windows Features on or off option



- d. Depending upon if you are adding IIS to a server machine or a desk top, you may be prompted for an add roles and features page. Select the Role-based or feature-based installation.
- e. Click NEXT a few times to get the Select Server Roles page and carefully add the Web Server (IIS) options that include the necessary options for Web+Center.

These include:

- Security – basic authentication and windows authentication minimum
- Application Development – See screen shot below – Make sure to include ASP
- Management tools – IIS management console and IIS 6 compatibility

Add Roles and Features Wizard

DESTINATION SERVER
s192-169-200-198.secureserver.net

Select server roles

Before You Begin
Installation Type
Server Selection
Server Roles
Features
Confirmation
Results

Select one or more roles to install on the selected server.

| Roles | Description |
|--|--|
| <input checked="" type="checkbox"/> File and Storage Services (2 of 12 installed) | |
| <input type="checkbox"/> Hyper-V | |
| <input type="checkbox"/> Network Policy and Access Services | |
| <input type="checkbox"/> Print and Document Services | |
| <input type="checkbox"/> Remote Access | |
| <input type="checkbox"/> Remote Desktop Services | |
| <input type="checkbox"/> Volume Activation Services | |
| <input checked="" type="checkbox"/> Web Server (IIS) (24 of 43 installed) | IIS 6 Management Compatibility provides forward compatibility for your applications and scripts that use the two IIS APIs, Admin Base Object (ABO) and Active Directory Service Interface (ADSI). You can use existing IIS 6 scripts to manage the IIS 7 Web server. |
| <input checked="" type="checkbox"/> Web Server (18 of 34 installed) <ul style="list-style-type: none"> <input checked="" type="checkbox"/> Common HTTP Features (Installed) <input checked="" type="checkbox"/> Health and Diagnostics (1 of 6 installed) <input checked="" type="checkbox"/> Performance (1 of 2 installed) <input checked="" type="checkbox"/> Security (4 of 9 installed) <input checked="" type="checkbox"/> Application Development (6 of 11 installed) <ul style="list-style-type: none"> <input type="checkbox"/> .NET Extensibility 3.5 <input checked="" type="checkbox"/> .NET Extensibility 4.5 (Installed) <input type="checkbox"/> Application Initialization <input checked="" type="checkbox"/> ASP (Installed) <input type="checkbox"/> ASP.NET 3.5 <input checked="" type="checkbox"/> ASP.NET 4.5 (Installed) <input checked="" type="checkbox"/> CGI (Installed) <input checked="" type="checkbox"/> ISAPI Extensions (Installed) <input checked="" type="checkbox"/> ISAPI Filters (Installed) <input type="checkbox"/> Server Side Includes <input type="checkbox"/> WebSocket Protocol <input checked="" type="checkbox"/> FTP Server (1 of 2 installed) <input checked="" type="checkbox"/> Management Tools (5 of 7 installed) <ul style="list-style-type: none"> <input checked="" type="checkbox"/> IIS Management Console (Installed) <input checked="" type="checkbox"/> IIS 6 Management Compatibility (3 of 4 installed) <ul style="list-style-type: none"> <input checked="" type="checkbox"/> IIS 6 Metabase Compatibility (Installed) <input type="checkbox"/> IIS 6 Management Console <input checked="" type="checkbox"/> IIS 6 Scripting Tools (Installed) <input checked="" type="checkbox"/> IIS 6 WMI Compatibility (Installed) <input checked="" type="checkbox"/> IIS Management Scripts and Tools (Installed) <input type="checkbox"/> Management Service <input type="checkbox"/> Windows Deployment Services <input type="checkbox"/> Windows Server Essentials Experience <input type="checkbox"/> Windows Server Update Services | |

< Previous
Next >
Install
Cancel

STEP 2. Download webcenter100.exe from the Internet Software Sciences website (<https://www.inet-sciences.com/products/downloads/>) and run the installation. You may be able to right-click and select ‘Run as Administrator’ however, IF YOU DO NOT SEE AN INSTALLATION WINDOW, you’ll have to log onto the server as the Administrator. **Note:** Do not install this product under the inet-pubs/wwwroot directory. Installing this application under the wwwroot will cause some special restrictive directory permissions that make the default Access database un-updateable unless the directory permissions are changed. *We recommend you install it in the default install path which is*

- *C:\program files (x86)\Internet Software Sciences\web+center 10.0*

STEP 3: Quick Setup scripts (Recommended)

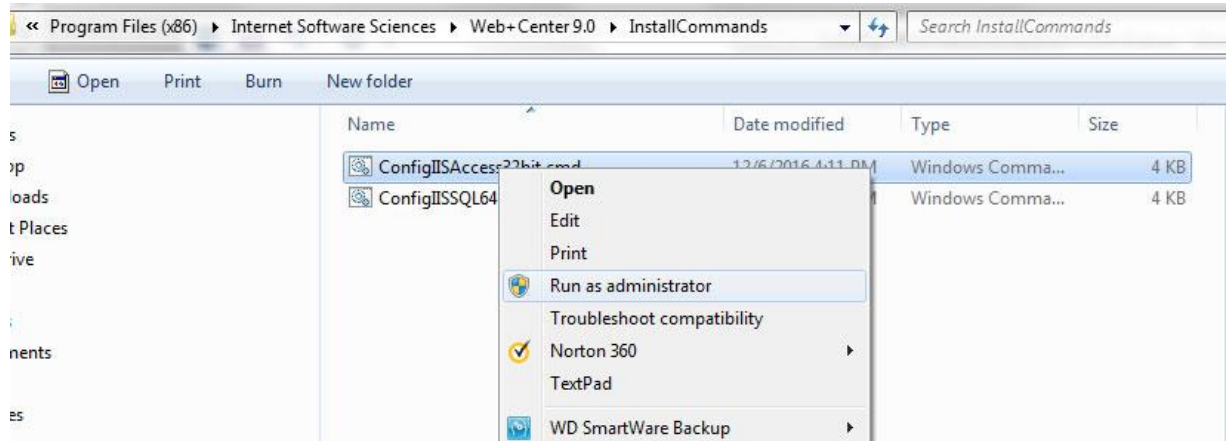
If you have installed Web+Center into the default folder listed above, a *.CMD script is available to perform install steps 3-4. To run this script,

- (1) Launch the windows file explorer and navigate to the directory:

C:\program files (x86)\Internet Software Sciences\web+center 100\InstallCommands\

- (2) Select the appropriate CMD script you wish to run

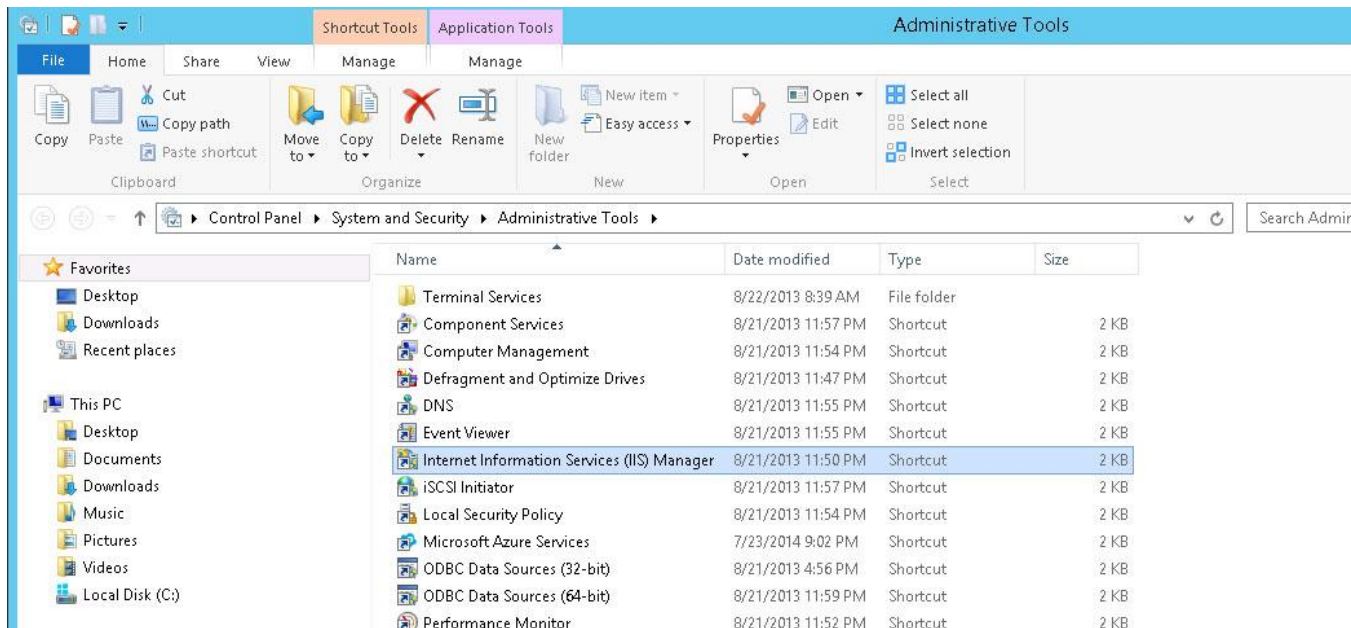
- ConfigureIISAccess32bit.cmd – For 32 bit Access backend database installs on 64 bit OS
 - ConfigureIISSQL64bit.cmd – For 64 bit SQL*Server backend database installs on 64 bit OS
- And then do a right mouse click and select the “Run As Administrator” option from the popup.



If you ran these scripts successfully, you can skip to STEP 5.

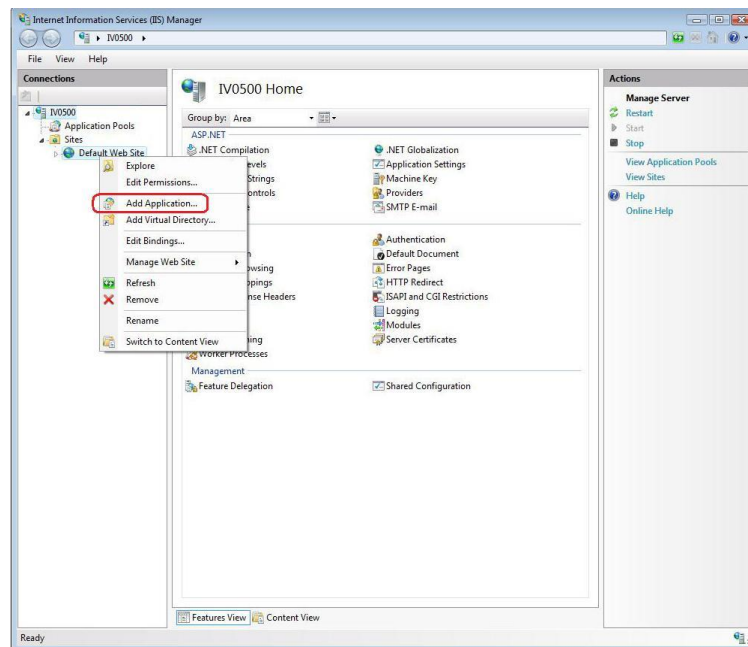
STEP 3. Configure default website or create new website

- Open IIS Manager** (Start → Settings → Control Panel → Administrative Tools → Internet Information Services (IIS) Manager or Start → All Programs → Administrative Tools → Internet Information Services (IIS) Manager) depending on your operating system.



- b. On the Connections list (left panel), expand the tree until ‘**Default Web Site**’ is displayed. Right-click on Default Web Site and select ‘**Add Application**’.

NOTE: The “application directory” is different from IIS 6.0 which only offered “virtual” directories. You must select application directories for tech100, customer100, etc.



Enter ‘**tech100**’ in the ‘**Alias**’ textbox.

For the '**Physical Path**', browse to the directory in which you installed Web+Center and select the TechCenter directory below it.

Press '**OK**' and '**OK**' to close the above windows and create the Application.

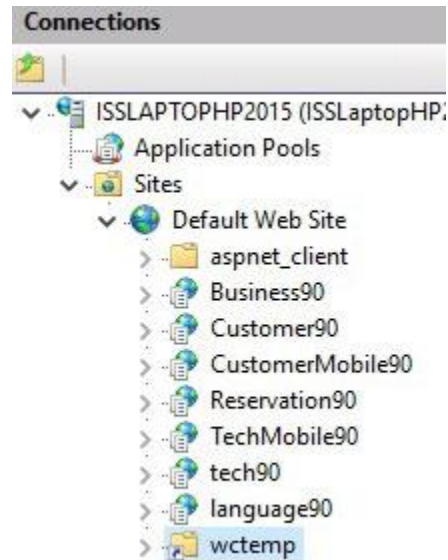
- c. Add the remaining 7 Web+Center IIS Application directories :

| APPLICATION/ALIAS | PHYSICAL DIRECTORY | Website/Application |
|-------------------|--------------------|---|
| Customermobile100 | CustomerMobile | Smart phone version of Customer+ Center |
| TechMobile100 | TechMobile | Smartphone version of Tech+Center |
| Tech100 | Techcenter | Tech+Center application |
| Customer100 | CustomerCenter | Customer+Center application |
| Business100 | BusinessCenter | Business+Center application |
| Language100 | Language | Language directory |
| Reservation100 | ReservationCenter | Reservation+Center application |

Add one IIS “virtual directory” for download and temp files. Users should only be able to read from this directory and a virtual directory only allows read operations.

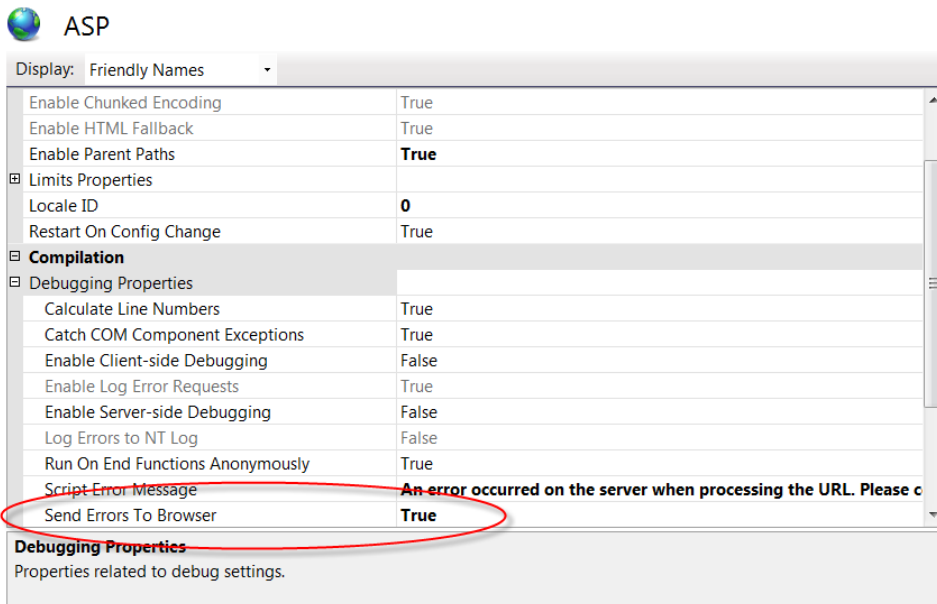
| Virtual Directory | Physical Directory | Website/Application |
|-------------------|--------------------|-------------------------------|
| wctemp | wctempfiles | Temporary files and downloads |

When finished adding all of the application and virtual directories, the properties under the Default Web Site should look like:




STEP 4. Configure website properties

- With IIS still open, select '*default website*' on the left hand '*Sites*' list, and then double-click the '*ASP*' icon in the center or right-panel under the '*IIS*' section.
- Set '*Enable Parent Paths*' to true.
- To enable us to debug any problems, it is necessary for us to know the line number and name of the offending module. In the center section of IIS, expand the '*Debugging Options*' section by double-clicking on the '+'. Under '*Send Errors to Browser,*' set this value to '*True*'.

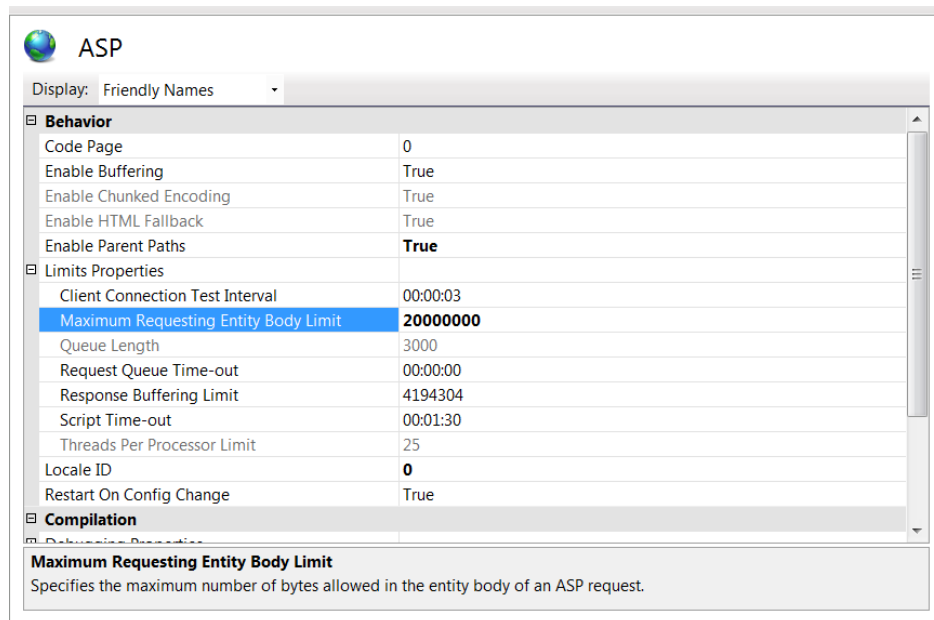


NOTE for later: To display line numbers and module names in case of problems on the client's browser you'll need to go to Internet Explorer and uncheck the 'Show Friendly Errors' under 'Internet Properties' -> 'Advanced Properties', -> 'Browsing'; otherwise only a 'Internal Error 500' message will appear. If you are using Chrome as your browser:



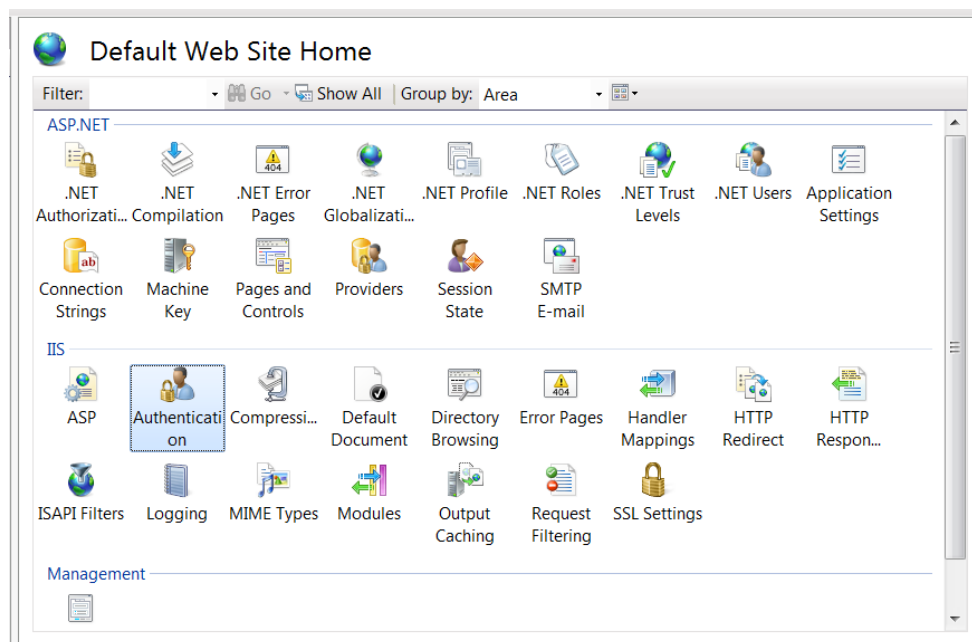
1. Click the Chrome menu  on the browser toolbar.
2. Select **Settings**.
3. Click **Show advanced settings** and find the "Privacy" section.
4. Deselect the "Use a web service to help resolve navigation errors" checkbox to disable the feature. Select the checkbox to enable it again.

- d. **Set Limits on file upload.** In order to prevent problems when users upload/attach files to cases, it is often necessary to reset the default limits to something larger than the default amount set by Microsoft. Expand the '**Limits Properties**' section (still under '**ASP**') by clicking on the '+' and set the '**Maximum Requesting Entity Body Limits**' value to something larger (we suggest 20,000,000).



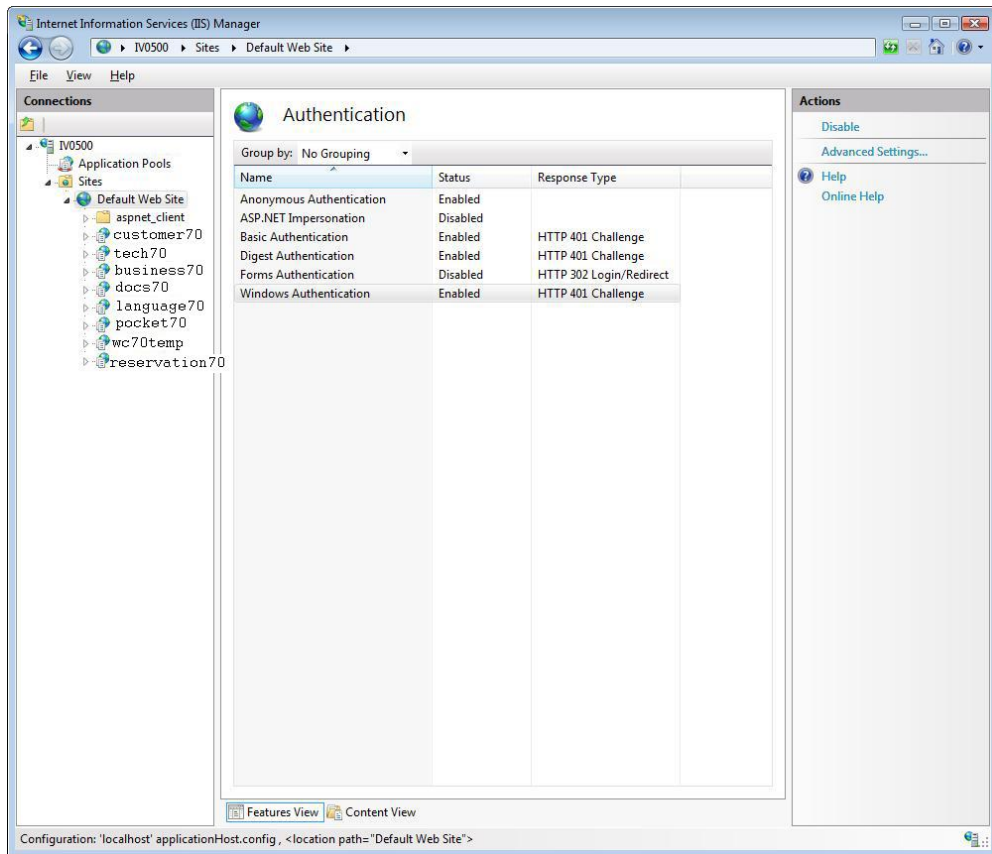
Now click the Apply button in the upper right hand corner to apply all of these settings to the ASP property.

- e. **Set Authentication.** Click the Default Web Site in the '*Site*' left-hand menu. Double-click '*Authentication*' under IIS.



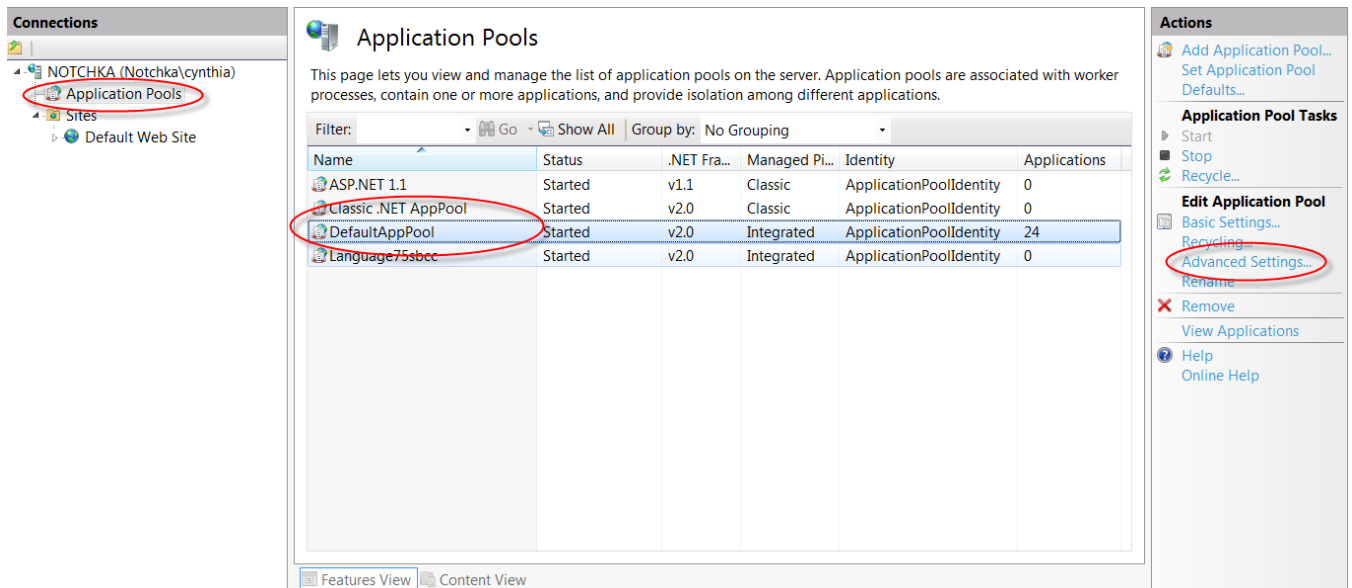
Authentication should be set as below:

Anonymous, basic authentication and windows authentication need to be configured as a minimum. Some more complicated networks will also require digest authentication.

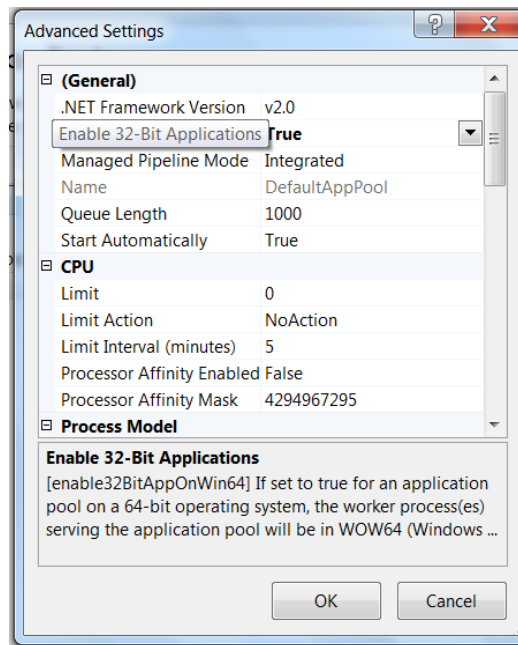


Not all of the above rows may exist, depending on your operating system.

- e. If you will be using Access as your back-end database with a 32 bit ODBC driver or a 32-bit installation of SQL Server, you'll also need to do the following. Select **'Application Pool'** in the left-hand menu. Under the center section, **'Application Pools'** select **'DefaultAppPool'**, in the right-hand menu, then select **'Advanced Settings...'**.



On the screen which appears next, change the setting of '*Enable 32-bit Applications*' to '*True*'. DO NOT perform this step if you are running 64-bit SQL Server or 64 bit ACCESS.



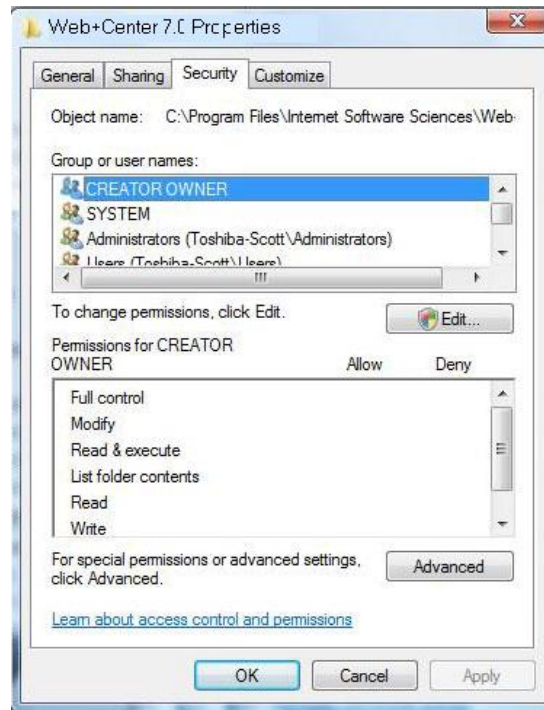
STEP 5. Set the file security permissions for the web+center 10.X folder level and all sub folders to user group “everyone” full control and **remove all other users and break inheritance from directories above.**

The Web+Center application is setup to run as an “anonymous user” web application. To allow the webserver to allow anonymous users to access the ASP scripts and resources, one must set the file security permission to “Everyone” full control and remove all other users. To this, carefully follow the steps below.

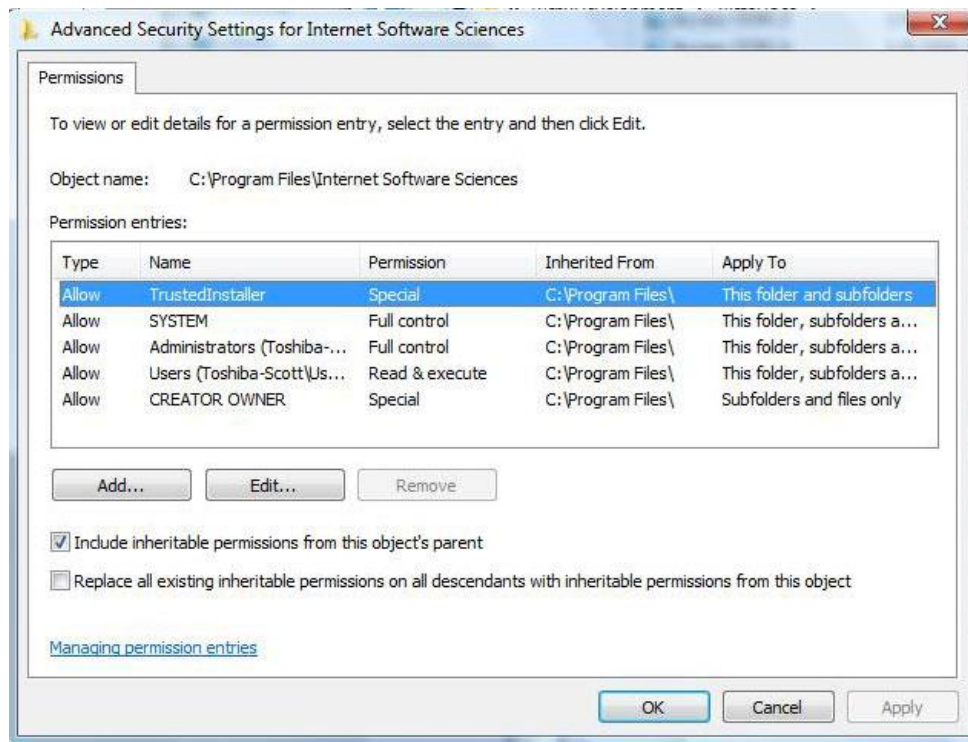
- a. Navigate to the folder in which you installed Web+Center 10.X typically:

C:\program files (x86)\Internet Software Sciences\Web+Center 10.0\

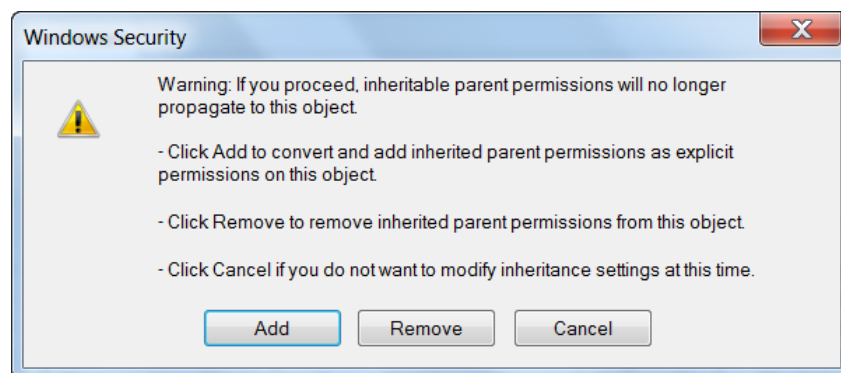
- b. Right mouse click and select the '*Properties*' menu item for the Web+Center 10.X folder
- c. Inside of the properties dialog window, first click on the 'Security' tab to change the permissions.

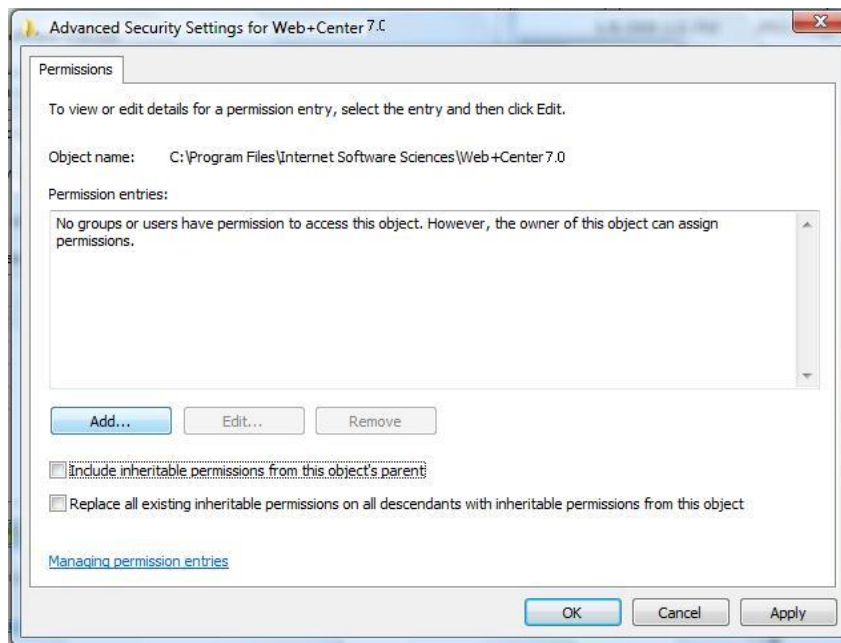


- c. First, we need to break the set of inherited permissions that come with the Program Files directory. Click on the '**Advanced**' button near the bottom.
- d. Click on the '**Change Permissions...**' Button



- e. Uncheck the ***'Include inheritable permissions from this object's parent'*** and click ***'OK'***. A windows Security dialog box will appear that provides the Copy, Remove and Cancel options. Select the ***'Remove'*** button.

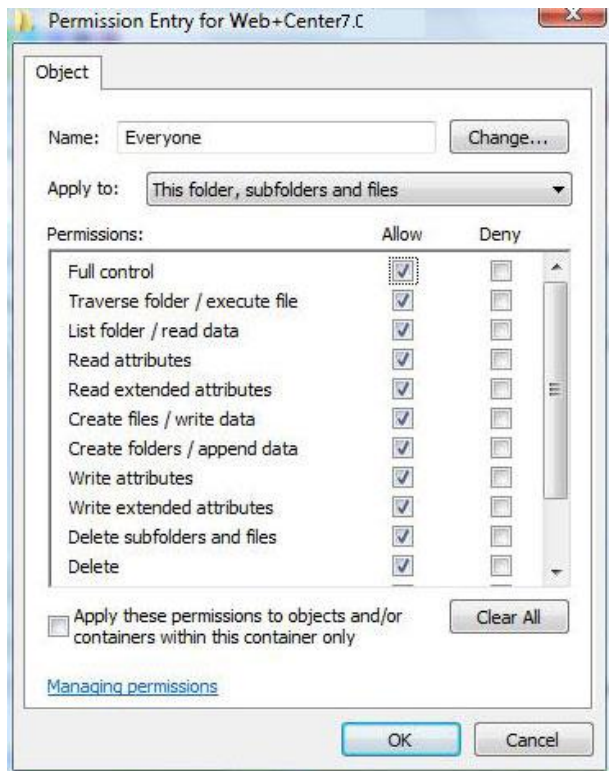




- f. Click the '**Add...**' button. In the 'Select User or Group' dialog box, enter the user "**Everyone**" and press the '**Check Names**' button, then the '**OK**' Button.



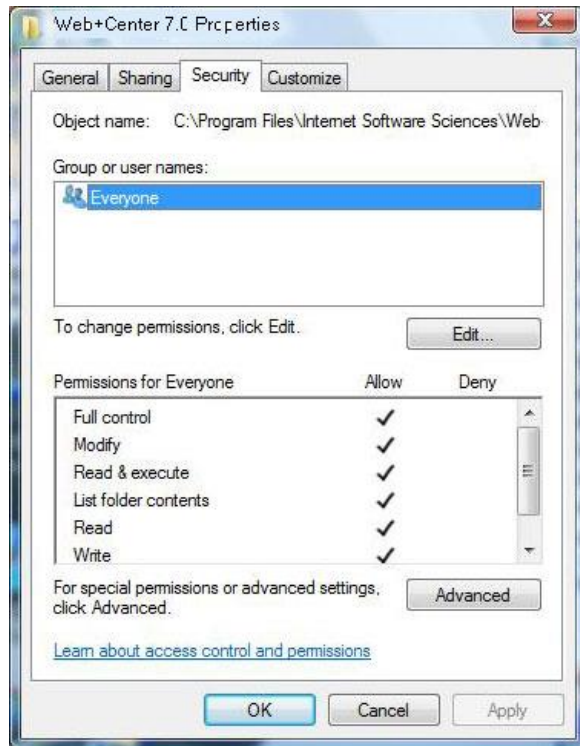
- g. Check the '**Full Control**' checkbox under '**Allow**' for the 'Everyone' user and press '**OK**'.



- h. Click the '**Apply**' Button to apply these permissions and then click '**OK**'.



- i. Please confirm that your file security settings for the Web+Center folders and all sub folders are set just the “Everyone” full control and NO other users, similar to the security tab settings shown below. We recommend you perform a FULL computer reboot at this point to “set” the new file security permissions into the Access Control Lists (ACLs) used by IIS.

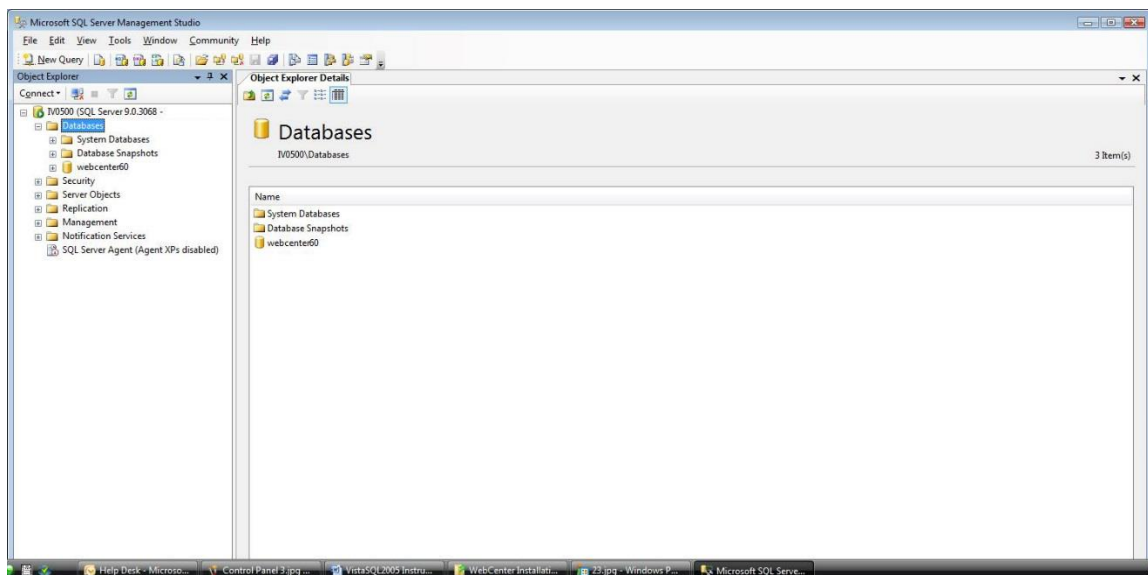


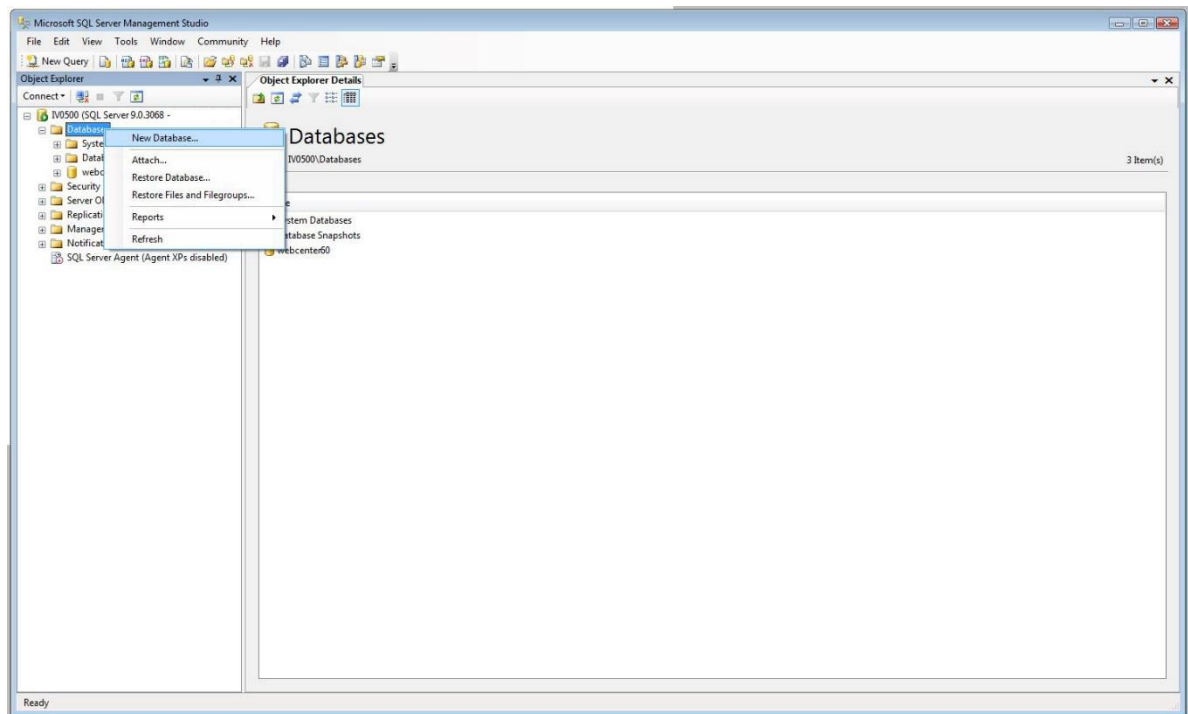
STEP 6. Install SQL Server database and SQL Server Management Studio if they are not already installed (SQL Server only).

STEP 7. Create the Web+Center database (SQL Server only)

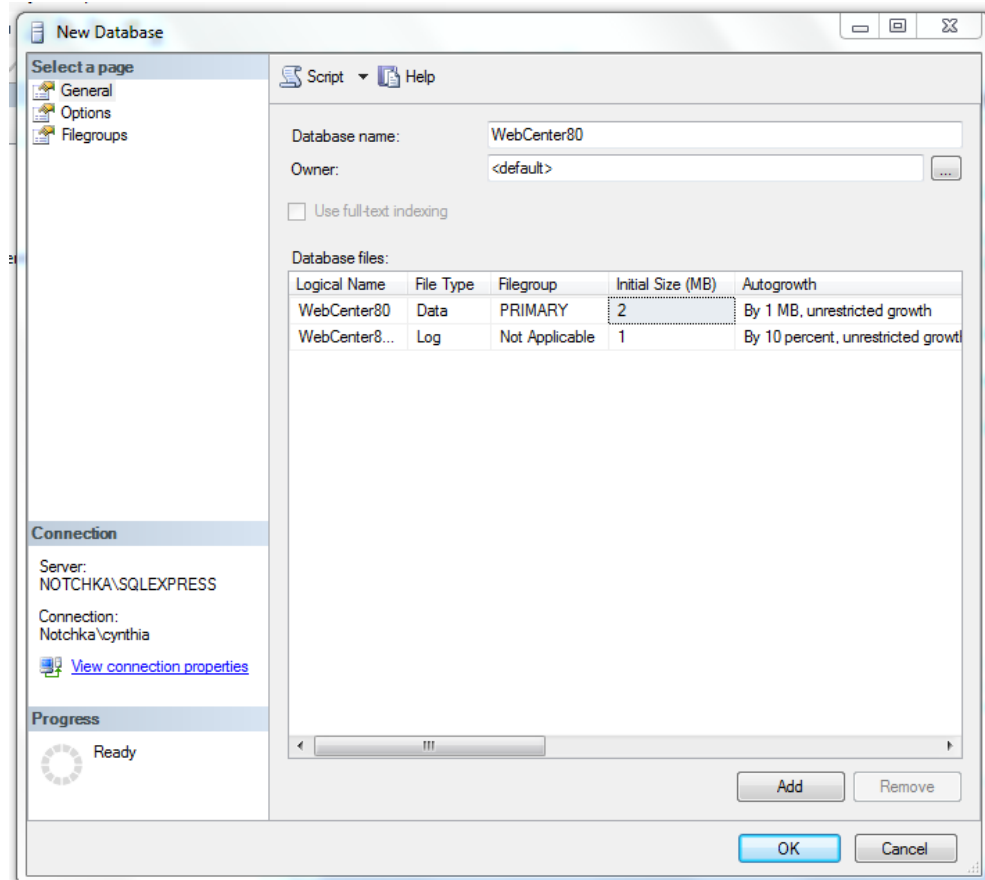
Please follow the following steps below to create a Web+Center 100 database. This step does not apply if you are planning on using MS Access as the back end database.

- Open SQL Server Management Studio and connect to the appropriate database server.
- In the Object Explorer area on the left side, right-click **Databases**, then select **New Database**.

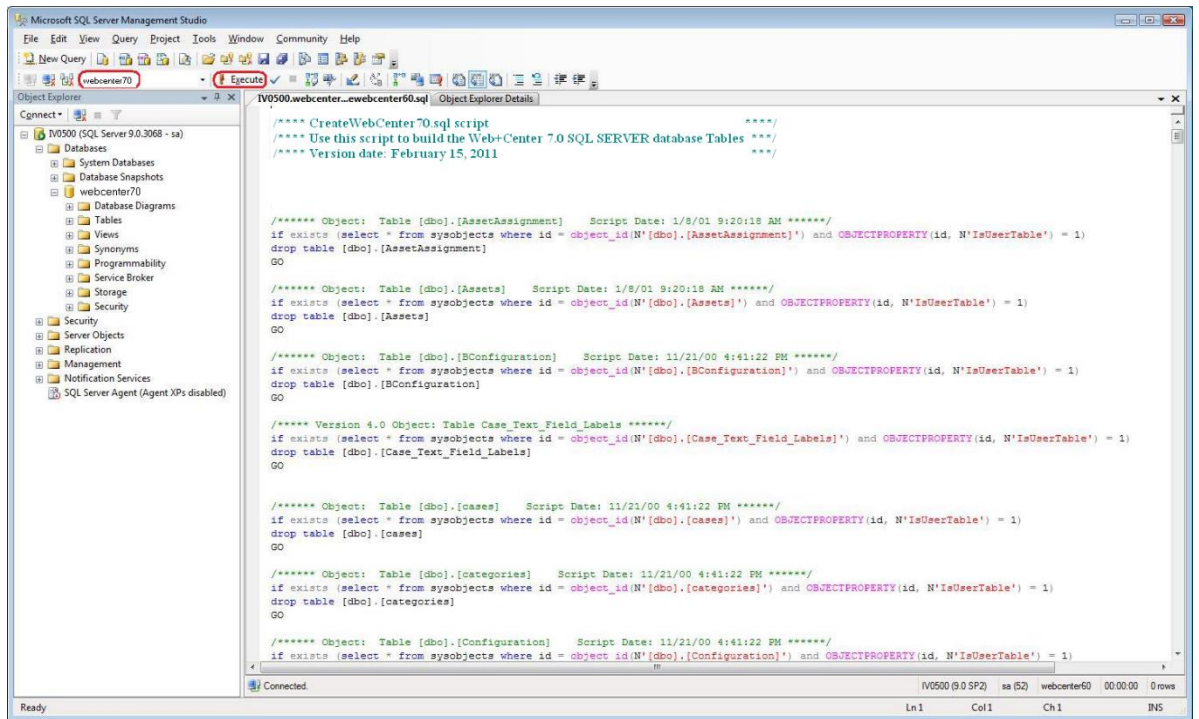




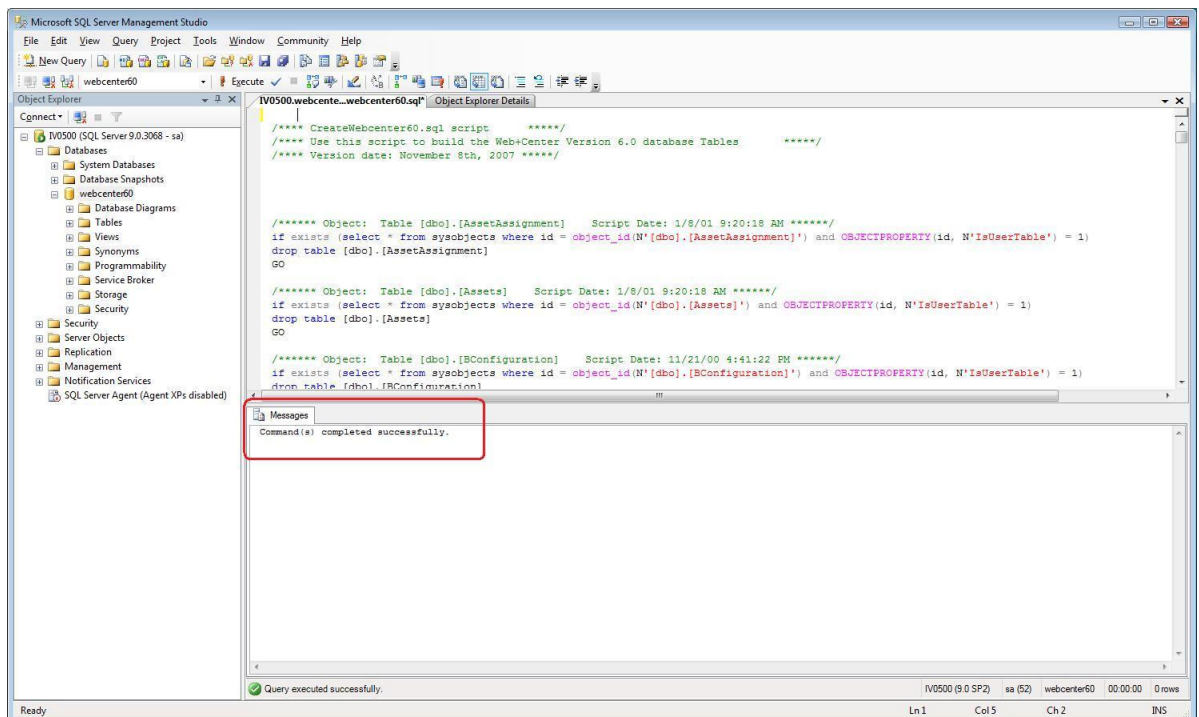
- c. Enter **webcenter100** into the '**Database name**' textbox. Click **OK** to create the initial blank database.



- d. Next, the database tables need to be created. From the menu bar at the top of the SQL Server Management Studio, select File → Open → File → *navigate to C:\program files\Internet Software Sciences\Web+Center 10.X\databases\Createwebcenter100.sql*. After you select the script to run, Management Studio may prompt you to connect to the server, so select the appropriate server and press the **Connect** button.
- e. **IMPORTANT:** Select the database where you want to run this query. In the upper left hand portion of the SQL Server Management Studio next to the 'EXECUTE' button, you will see a drop down list of databases. Select the **webcenter100** database.

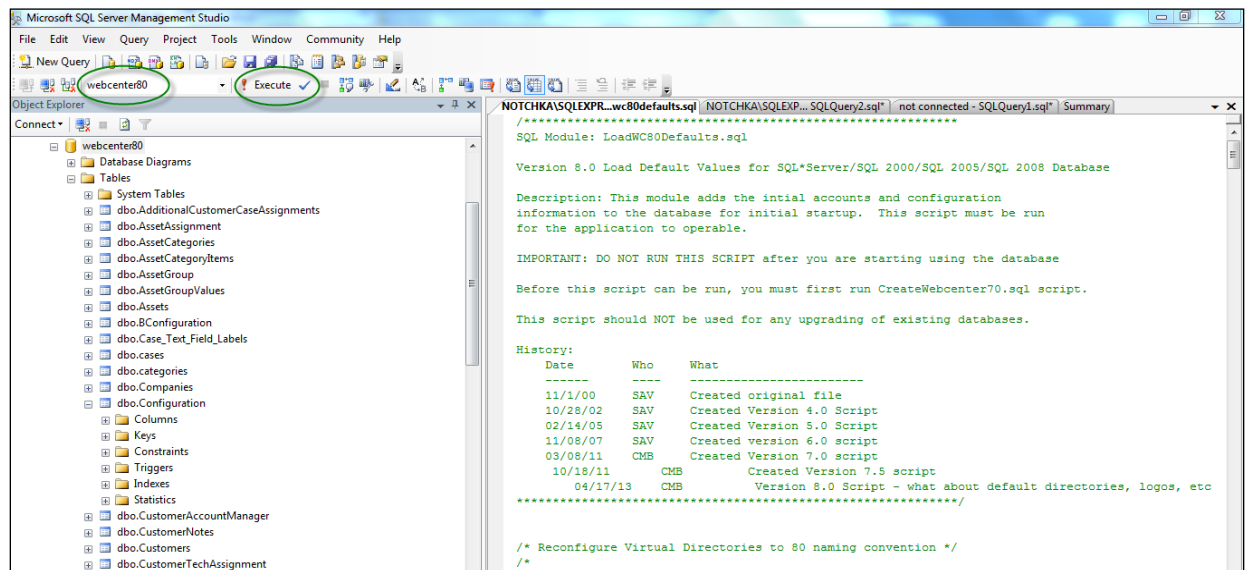


- f. Click on the **! Execute** button to create all of the tables and database settings. After the script has run, in the Messages window it should display a message indicating “**Command(s) completed successfully**”.

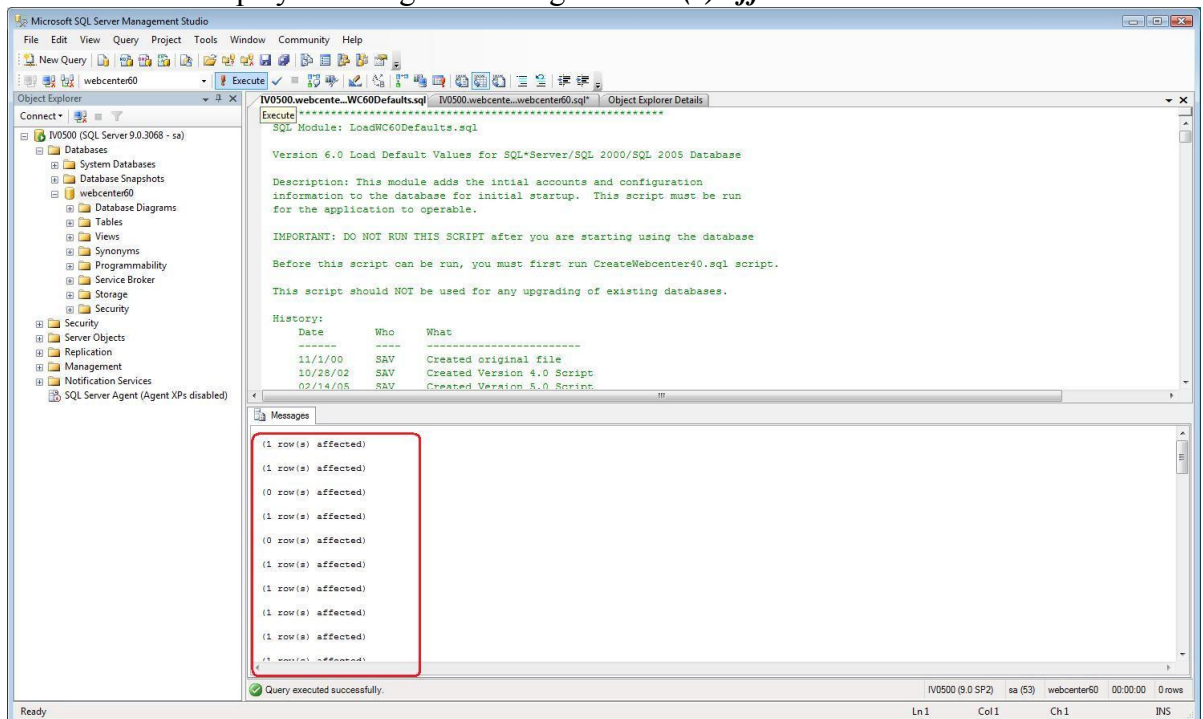


- g. Next you'll need to run a second SQL script to populate the database with some default data. Select File → Open → File → navigate to C:\program files\Internet Software Sciences\Web+Center 10.X\databases → **LoadWC100Defaults.sql**. It will prompt you to connect to the server, so select the appropriate server and press the **Connect** button.

- h. **IMPORTANT:** Select the database where you want to run this query. In the upper left hand portion of the SQL Server Management next to the 'Execute' button you will see a drop-down list of databases. Select the **webcenter100** database.



- i. Click on the **! Execute** button to create all of the tables and database settings. In the Messages window it should display a message indicating “xx Row(s) affected”.

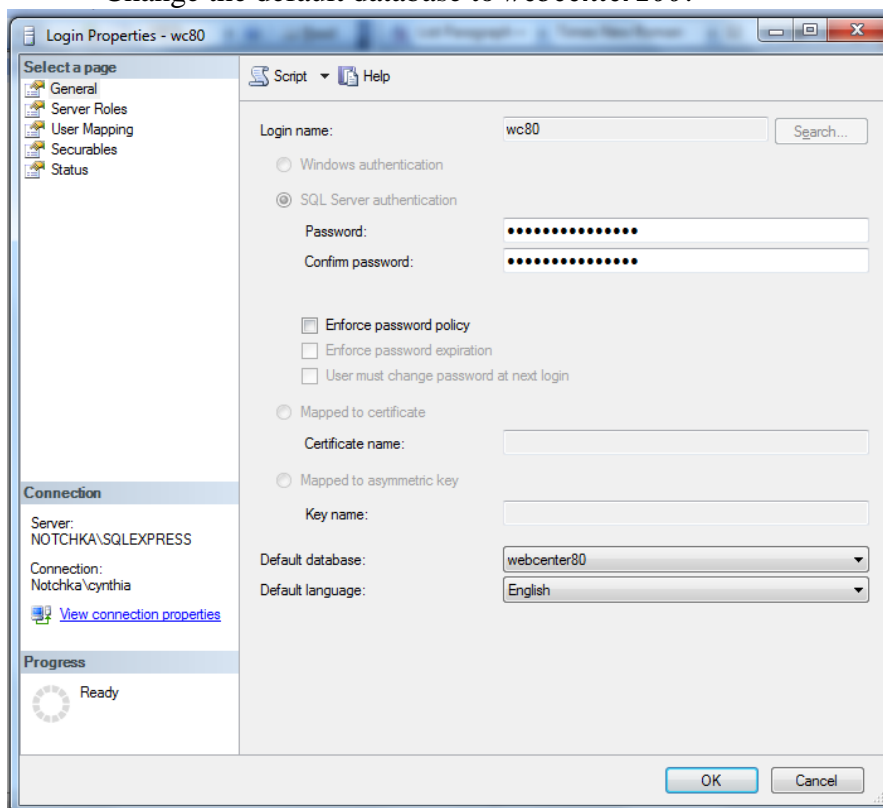


This completes the creation of the Webcenter100 database tables and initializes some of the columns with default data.

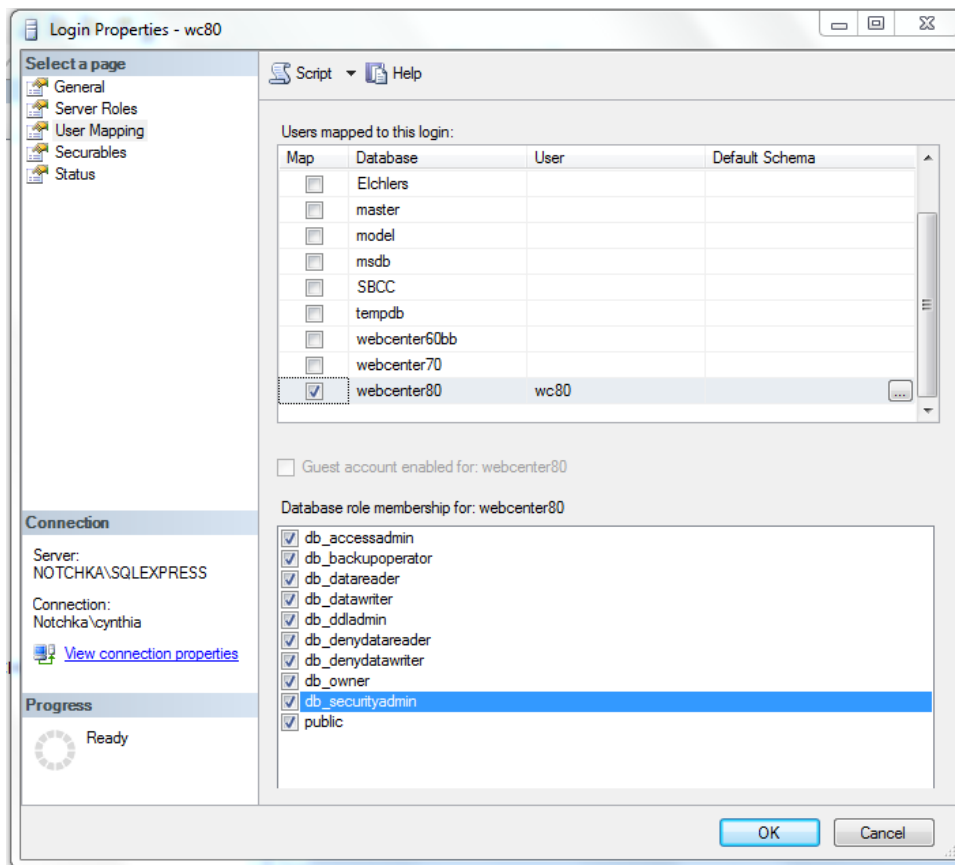
STEP 8. Create the database security account and permissions for the wc100 user (SQL Server only).

You must create a SQL user account for the webcenter100 database. The Web+Center software accesses the database using SQL Server Authentication (NOT windows authentication) and requires a SQL Server user account. Create a SQL user account with username of “**wc100**” and a password of “**wc100pass**”.

- a. To add this user account for your webcenter100 database, in the SQL Server Studio Manager under Object Explorer, navigate to **Security** and then Right Mouse Click and select the **New...** Login menu option.
 - In the Login name text box, enter “**wc100**”.
 - For Authentication area, select the SQL Server Authentication radio button and enter the password of: “**wc100pass**”.
 - Uncheck **Enforce password policy** and **Enforce password expiration**
 - Change the default database to **webcenter100**.



- b. Click on ‘**User mapping**’. Select the webcenter100 database in the top part of the screen. Check all of the boxes in the database role membership box at the bottom. Press the ‘**OK**’ button to save this user profile.



STEP 9. Create the ODBC DSN for the database.

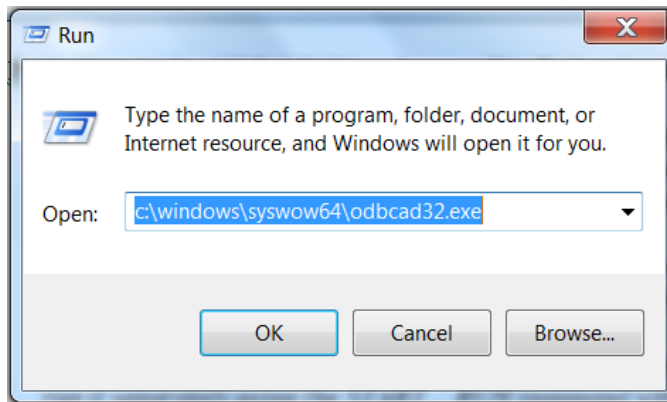
- a. Start the ODBC Administrator

NOTE: 64-Bit OS differences: If you are installing Web+Center on a 64-bit version of the operating system and if you want to connect to the Access 32 bit driver, you must run the 32 bit version of the Data Sources ODBC driver setup application.

| | | | |
|-------------------------------|--------------------|----------|------|
| iSCSI Initiator | 8/21/2013 11:57 PM | Shortcut | 2 KB |
| Local Security Policy | 8/21/2013 11:54 PM | Shortcut | 2 KB |
| Microsoft Azure Services | 7/23/2014 9:02 PM | Shortcut | 2 KB |
| ODBC Data Sources (32-bit) | 8/21/2013 4:56 PM | Shortcut | 2 KB |
| ODBC Data Sources (64-bit) | 8/21/2013 11:59 PM | Shortcut | 2 KB |
| Performance Monitor | 8/21/2013 11:52 PM | Shortcut | 2 KB |
| Resource Monitor | 8/21/2013 11:52 PM | Shortcut | 2 KB |
| Security Configuration Wizard | 8/21/2013 11:45 PM | Shortcut | 2 KB |
| Server Manager | 8/21/2013 11:55 PM | Shortcut | 2 KB |
| Services | 8/21/2013 11:54 PM | Shortcut | 2 KB |

For 32-bit setups: If you can't find the 32-bit version of the ODBC database sources you can run it by using the START... RUN command with the file path:

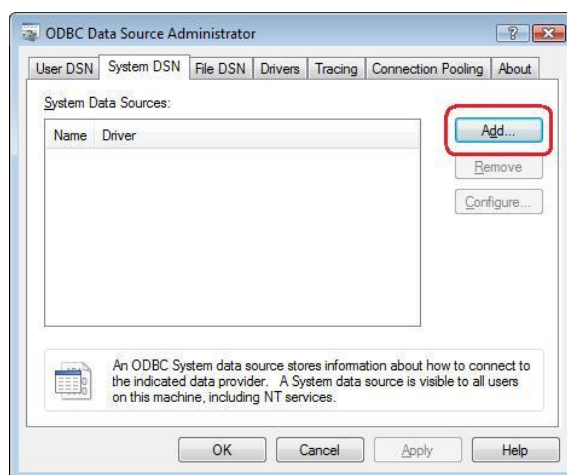
C:\Windows\SysWOW64\odbcad32.exe



For 64-bit installations (SQL Server 64-bit) you can start the ODBC Administrator directly:
 Navigate to and double click Administrative Tools: Start → Settings → Control Panel →
 Administrative Tools → *Data Sources (ODBC)* or Start → Administrative Tools → *Data Sources (ODBC)* if using Windows 7.

| | | | |
|-------------------------------|--------------------|----------|------|
| iSCSI Initiator | 8/21/2013 11:57 PM | Shortcut | 2 KB |
| Local Security Policy | 8/21/2013 11:54 PM | Shortcut | 2 KB |
| Microsoft Azure Services | 7/23/2014 9:02 PM | Shortcut | 2 KB |
| ODBC Data Sources (32-bit) | 8/21/2013 4:56 PM | Shortcut | 2 KB |
| ODBC Data Sources (64-bit) | 8/21/2013 11:59 PM | Shortcut | 2 KB |
| Performance Monitor | 8/21/2013 11:52 PM | Shortcut | 2 KB |
| Resource Monitor | 8/21/2013 11:52 PM | Shortcut | 2 KB |
| Security Configuration Wizard | 8/21/2013 11:45 PM | Shortcut | 2 KB |
| Server Manager | 8/21/2013 11:55 PM | Shortcut | 2 KB |
| Services | 8/21/2013 11:54 PM | Shortcut | 2 KB |

b. In the ODBC Data Source administrator, click on the '*System DSN*' tab.



c. Inside the System DSN tab, click the '*Add...*' button to add a new system DSN.

- d. From this point, the paths for SQL Server and Access diverge.

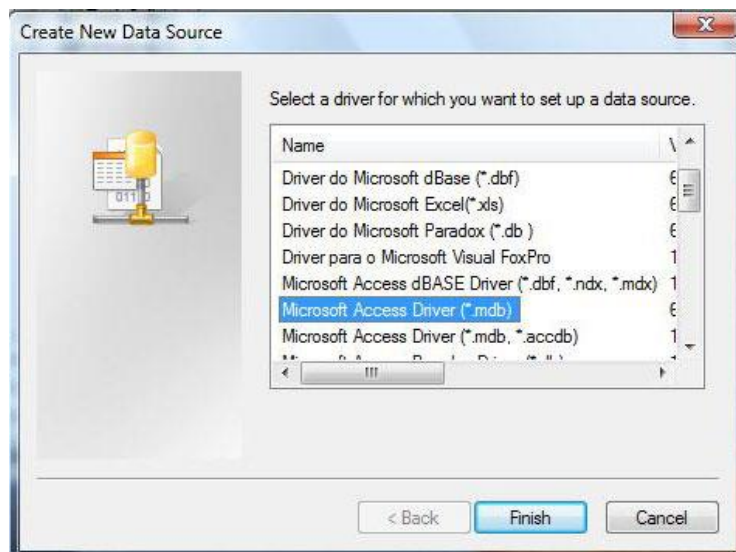
MS ACCESS STEPS:

Inside the **'Create New Data Source'** window, select **'Microsoft Access Driver (*.mdb)'** and press the **'Finish'** button.

IMPORTANT NOTE: Until about 2014, Microsoft did not have a 64 bit version of their ODBC ACCESS driver easily available and delivered as part of their OS. We don't recommend you use the MS Access 64 bit ODBC driver for variety of MS product compability reasons.

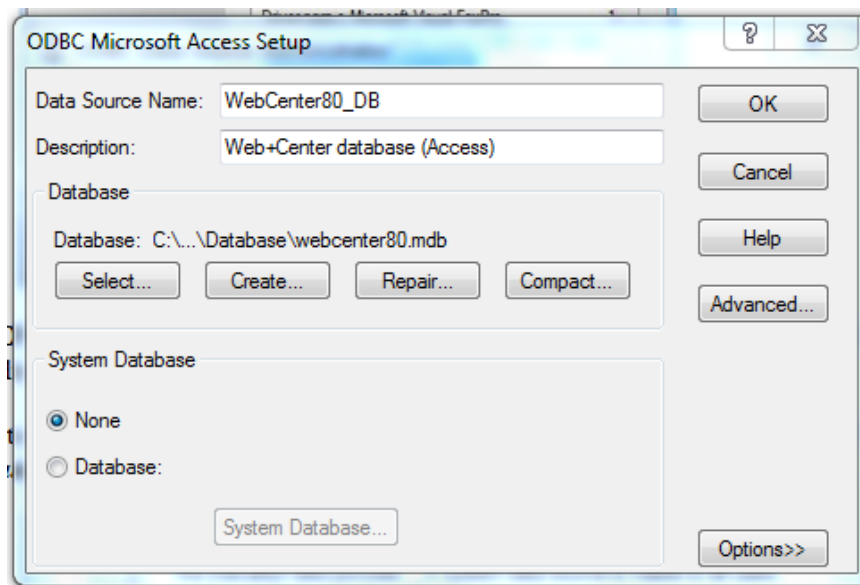
With later versions of Windows 10, Server 2012, it was finally included. For more information, please reference our newsletter article about the 64 ACCESS ODBC driver at

<https://www.inet-sciences.com/64-bit-odbc-access-driver-for-webcenter/>



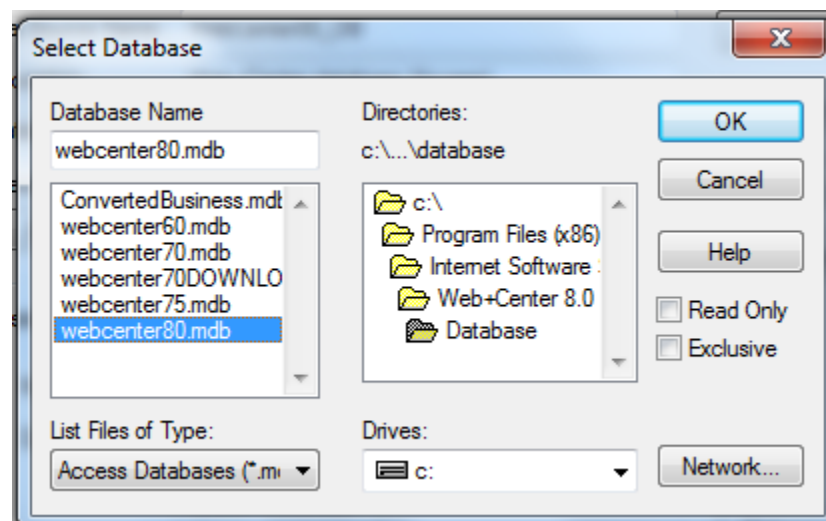
NOTE: This driver may not show up if you are using the 64-bit version of the ODBC Administrator with older versions of windows.

Enter **'WEBCENTER100_DB'** into the **'Data Source Name'** field and enter **'Web+Center Database'** in the **'Description'** field. Press the **'Select...'** button.

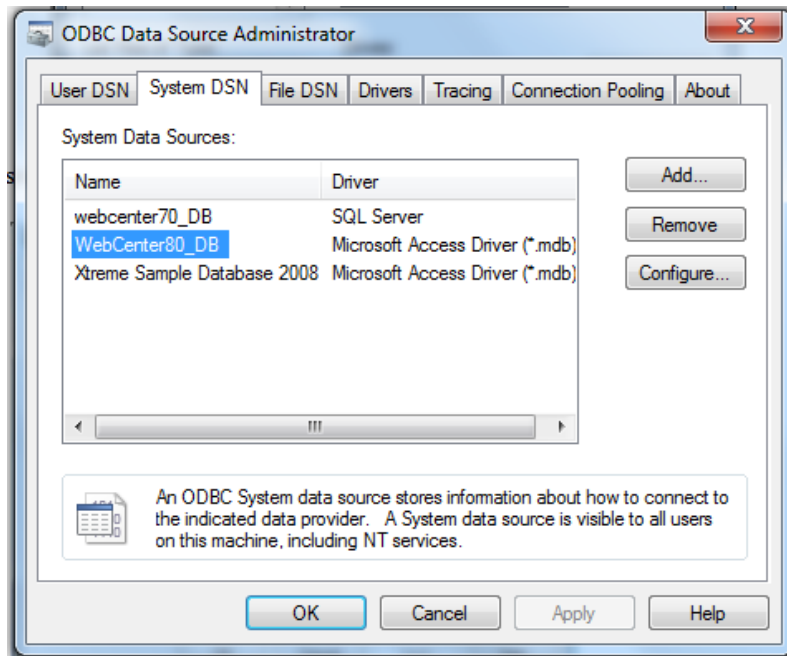


Navigate to the webcenter100.mdb file, select the **webcenter100.mdb** file and press the '**OK**' button. Typically this file has been installed in the directory:

c:\Program Files (x86)\Internet Software Sciences\Web+Center 10.X\Database\



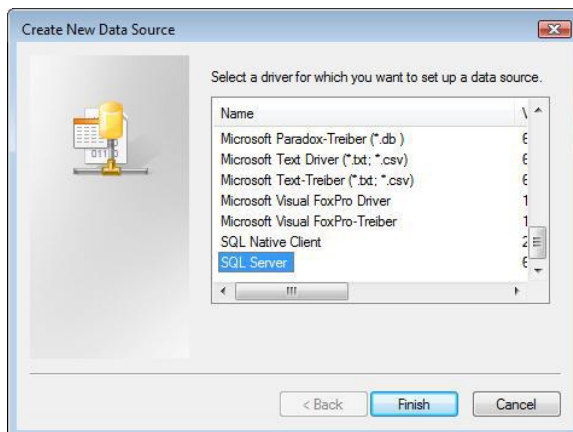
Press the '**OK**' button to complete your ODBC DSN connection.



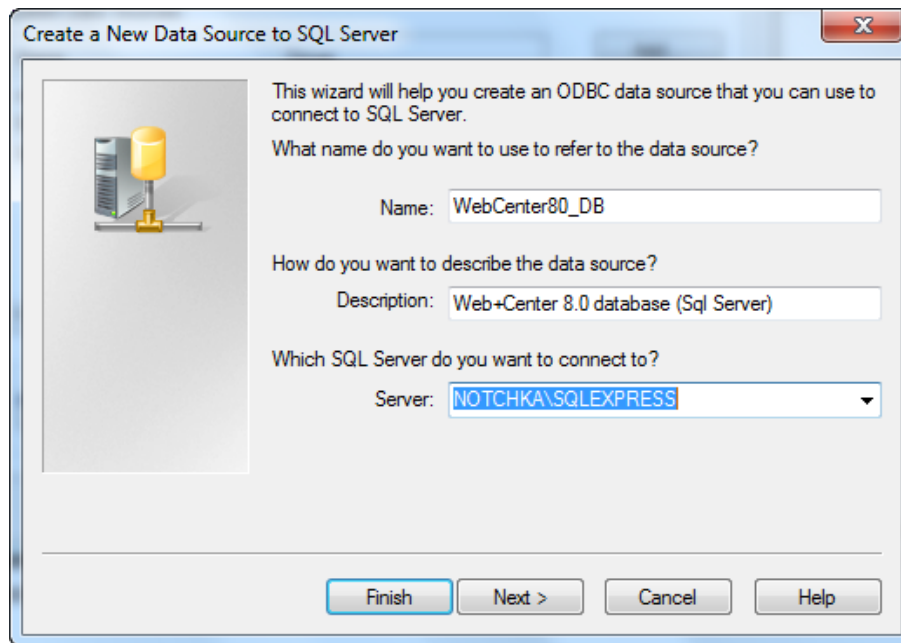
Press '**OK**' to close this ODBC Administrator.

SQL Server STEPS:

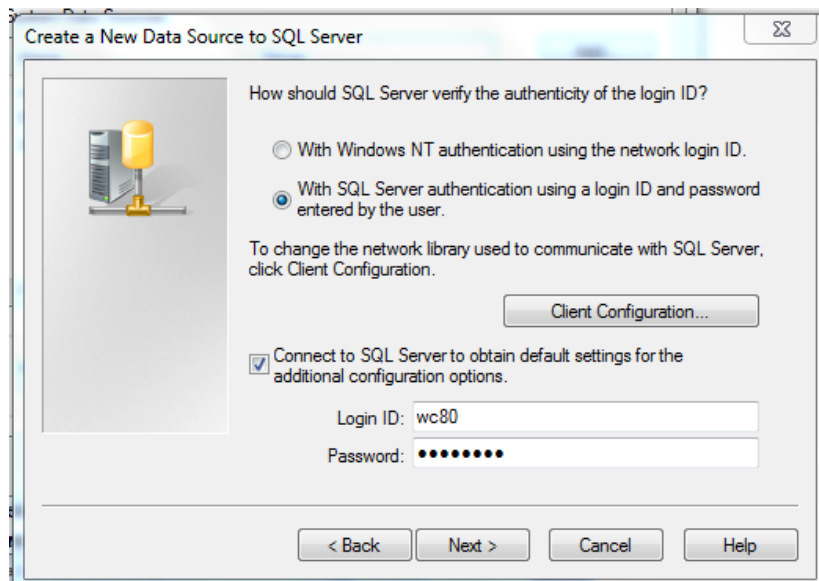
Inside the '**Create New Data Source**' window, select '**SQL Server**' – *Not SQL Server Native Client* and press the '**Finish**' button.



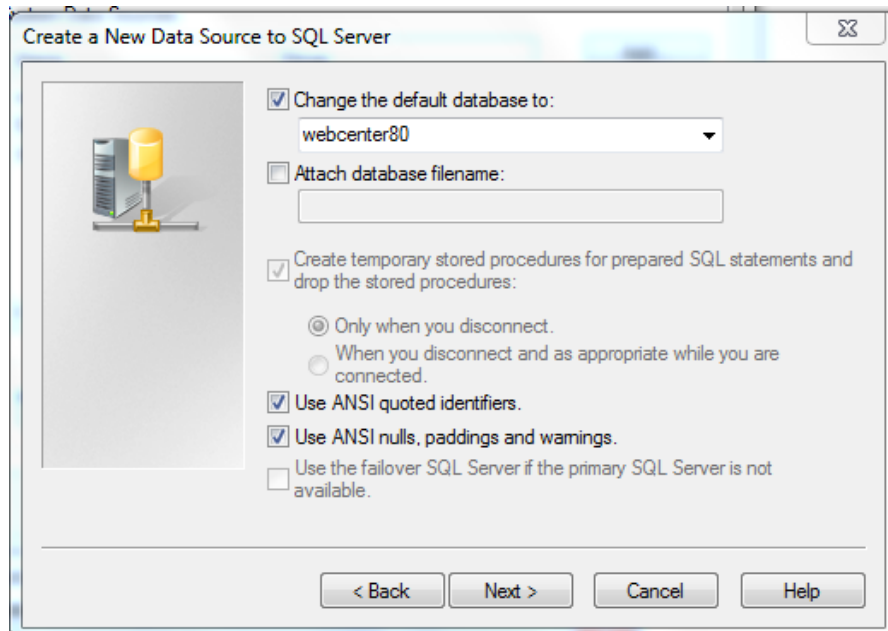
Enter '**WEBCENTER100_DB**' into the '**Data Source Name**' field and enter '**Web+Center Database**' (or some other description) in the '**Description**' field, select the SQL Server that contains the database, (or '**(local)**' if on the same server) and Press the '**Next**' button.



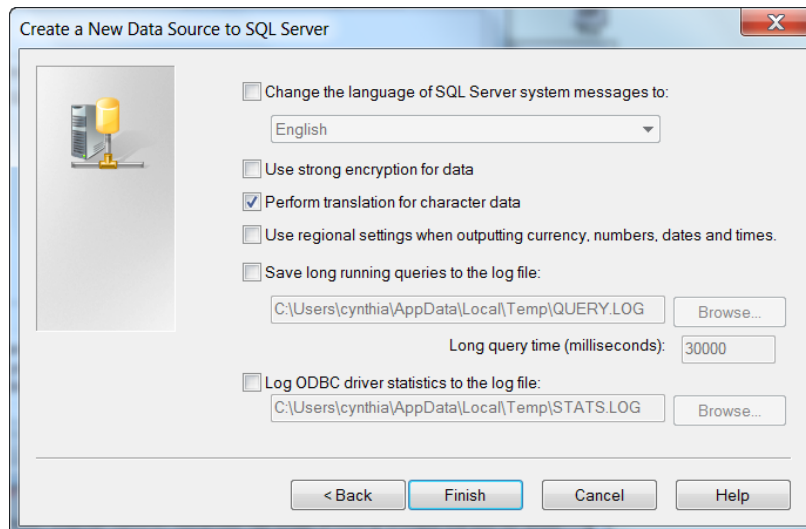
On the next screen, select the ***‘With SQL Server authentication...’*** option, check the ***‘Connect to SQL Server to obtain default settings...’*** checkbox, enter the login and password for the Web+Center database (wc100, wc100pass), and press the ***‘Next’*** button:



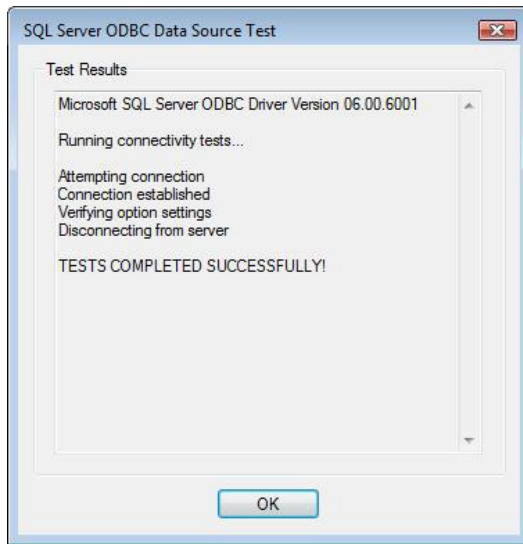
On the next screen, check the checkbox before ***‘Change the default database to:’***, select ***‘WebCenter100’***, and press the ***‘Next’*** button.



On the next screen, you can leave the defaults alone and press the ‘Finish’ button:



On the next screen, press the ‘***Test Data Source***’ button and make sure it connects successfully, then click ‘***OK***’ to complete your ODBC DSN connection.



STEP 10: Register the SMTP and POP ASP DLL's with REGSVR32**

**** NOTE: This is done for you if you ran the setup CMD file earlier**

Web+Center uses a 3rd party licensed component to handle complex SMTP and POP email connections and operations. There are two DLL's that must be registered with the operating system to make them work correctly.

Launch a Command Program prompt as an administrator (right mouse click on the Command prompt icon).

Navigate the command prompt directory to:

For 64 bit SQL*Server installs:

C:\program files (x86)\Internet Software Sciences\Web+Center 100\ASPMailer

For 32 bit Access installs:

C:\program files (x86)\Internet Software Sciences\Web+Center 100\ASPMailer32bits

Then enter correct (2) REGSVR32 commands for your install:

For 64 bit SQL*Server installs:

c:\windows\system32\regsvr32 aosmtp.dll

c:\windows\system32\regsvr32 anpop.dll

For 32 bit installs:

c:\windows\syswow64\regsvr aosmtp.dll

c:\windows\syswow64\regsvr32 anpop.dll

STEP 11. Run the install tests

Launch your favorite browser on the server where you are doing the configuration and enter the URL of:

<http://localhost/tech100/installtest.htm>

You should see the test page shown below. Click on the '*Please Click Here – Installtest.asp*'.



On the installtest.asp page, run through each of the 10 tests and configurations starting with number 1 and lastly click the TechCenter Application Login button at the end of the tests.

NOTE: Depending upon if you are running 64-bit Internet Information Server (IIS) or 32 bits, you may need to separately register the SMTP DLL into your system. (See instructions in Appendix A). The ASP email test will not successfully complete until these ASP mailer 64 or 32-bit dlls are installed and registered.

STEP 12: Testing the applications

Use the following URL's to test the Web+Center Suite of applications where <YourHostName> is either:

- your local machine name
- Your domain name (www.mycompany.com) or resolvable domain name
- Static or dynamic IP address
- The word "localhost" if browsing on the same machine as the server

Tech+Center comes configured with 2 default tech staff accounts with the following levels of permissions:

| Tech Username | Password | Access Level |
|----------------------|-----------------|------------------------|
| CSS-1000 | Config | Configurator (highest) |
| CSS-1003 | Tech | Read/Write tech level |

These are automatically available with the initial seed database. They should only be used to access the system initially and they should be immediately modified or deleted once other tech accounts are created. Refer to the Web+Center Users Guide on how to edit or add Tech+Center accounts. Use these for all Applications except Customer+Center and Customer+Mobile.

| | | |
|--------------------|--|--|
| Tech+Center | http:// <YourHostName>/tech100/ | |
| Customer+Center | http://<YourHostName>/customer100/ | |
| Reservation+Center | http://<YourHostName>/reservation100/ | |
| Business+Center | http://<YourHostName>/business100/ | |
| Mobile+Center | http://<YourHostName>/CustomerMobile100/ | |
| Tech+Mobile | http://<YourHostName>/TechMobile100/ | |

Installation is complete!

We recommend you review various documents on our website support page to assist in your configuration.

All Web+Center documentation is only available on the website under Support/Documentation

<https://www.inet-sciences.com/support-4/documentation-2/>

Documents include:

- Getting Started Guide
- Web+Center for Dummies
- Programmers Guide
- LDAP/Active Directory configuration guide
- User Training Documentation

Check out our Newsletter articles under resources for a very extensive set of articles about Web+Center and user applications.